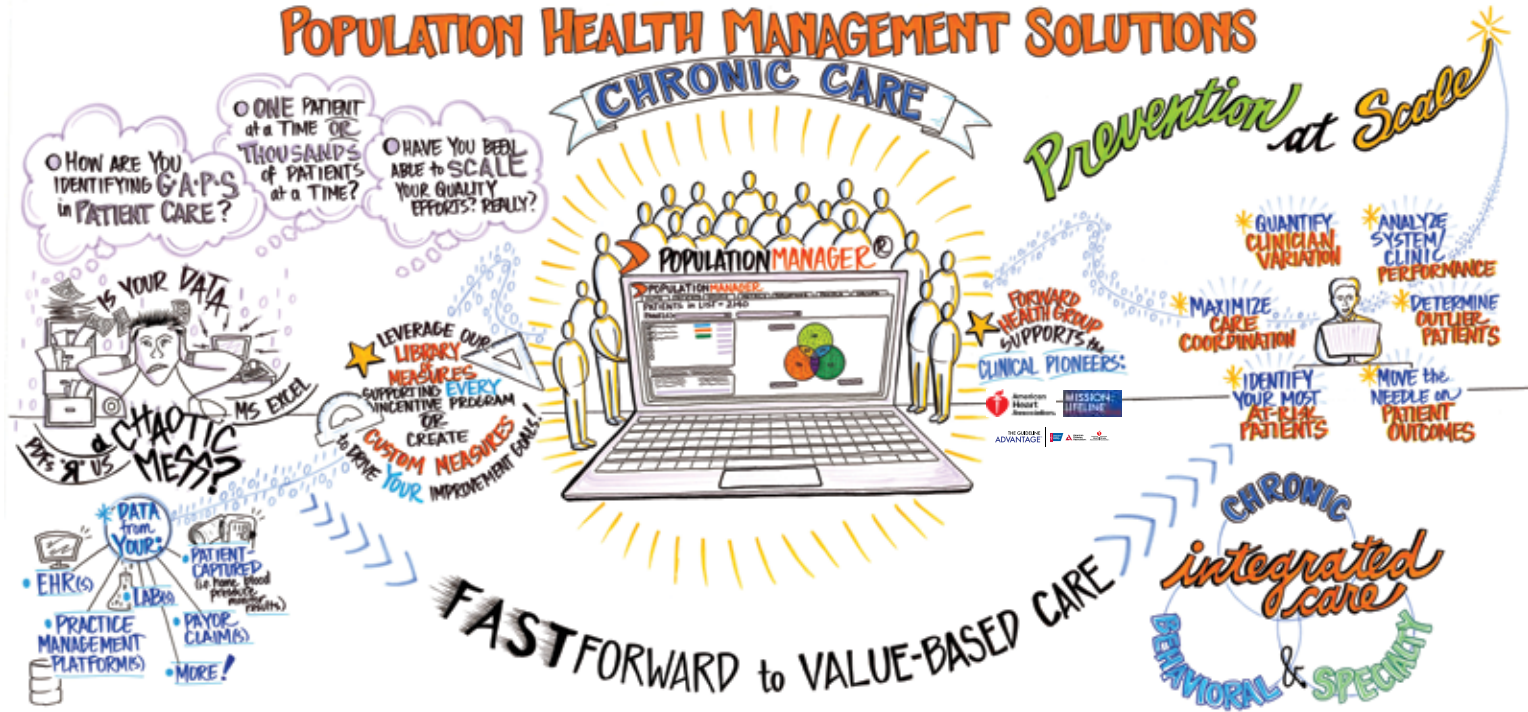


POPULATION HEALTH MANAGEMENT SOLUTIONS



At Forward Health Group, we take a smart start approach to population health management, analyzing your data to identify focus areas that will have the most impact on your specific organization. Hypertension? HIV? Depression? Acute episodic care? With proven measures that make sense, together we're on it. You get results—and payback—fast.

With PopulationManager®, you're benefiting in just 8 to 12 weeks, with healthier patients, happier doctors and significant progress toward a successful transition to value-based care.

 Learn more about how FHG can help you fast forward to value-based care. Contact us at 608 729 7530 or fhgtalk@forwardheathgroup.com.





Value-based Population Health
Management Solutions

FAST FORWARD TO VALUE-BASED CARE

ONLY FORWARD HEALTH GROUP HAS THE ABILITY TO FAST FORWARD YOUR TRANSITION TO VALUE-BASED CARE. WITH DATA YOU CAN TRUST, MEASURES THAT MATTER, AND AN ABILITY TO TRULY ENGAGE DOCTORS, FHG QUICKLY AND COST-EFFECTIVELY ENABLES HEALTHIER PATIENT POPULATIONS, AND A BETTER BOTTOM LINE.

FHG's PopulationManager® is making a difference in the quality of care and the financial health of provider organizations like yours:

- **Chronic Care.** Enabling improved outcomes in the management of chronic conditions and preventive care
- **Acute Episodic Care.** Achieving stability and income assurance in the treatment of high-risk, complex conditions.
- **Behavioral Health.** Attaining visibility and care integration needed to effectively address mental health issues.
- **Alternative Reimbursement Models.** Increasing accountability among all episodic care team entities.
- **Reporting.** Easing the reporting burden by providing data, calculation and report submission services.



Ready to fast forward to value-based care? Let's talk.
608 729 7530 fhgtalk@forwardhealthgroup.com

www.forwardhealthgroup.com

1 S. Pinckney Street • Suite 301 • Madison, WI 53703

